

# The Anchor Line

## November 2025

# Hope Lutheran Church

***Anchored in Jesus | Living with Joy | Reflecting His Love***

Pastor Matthew Baye	586-495-0253	mbaye@hopedepere.org
Kaitlyn Gregory, DCE	920-336-9843 ext. 2	dce@hopedepere.org
Church Office	920-336-9843 ext. 1	office@hopedepere.org
Gail Thiel, Preschool Director	920-336-9843 ext. 4	preschool@hopedepere.org
www.hopedepere.org   "Hope Lutheran Church" on Facebook   "Angels of Hope" on Facebook		

---

## From the Pastor's Desk...

***"And there will be signs in sun and moon and stars, and on the earth distress of nations in perplexity because of the roaring of the sea and the waves, people fainting with fear and with foreboding of what is coming on the world. For the powers of the heavens will be shaken. And then they will see the Son of Man coming in a cloud with power and great glory. Now when these things begin to take place, straighten up and raise your heads, because your redemption is drawing near." – Luke 21:25-28 (ESV)***

The end is near, Hope family!

You've probably encountered people who've proclaimed this message – usually, during times of political unrest or global difficulty. We've navigated some of those things, certainly. So has seemingly every generation since Christ ascended back into heaven.

But my friendly reminder to you that the end is near flows from a different source. It flows from the Bible itself, from the mouth of King Jesus: "Behold, I am coming quickly, and My reward is with Me, to render to every man according to what he has done. I am the Alpha and the Omega, the first and the last, the beginning and the end" (Revelation 22:12-13).

In the month of November, the church navigates its way to the end of the liturgical calendar, and our readings focus on this message. This doesn't mean that we try to predict the timing of Jesus' return, for Jesus himself has warned us against doing so. Instead, we take time to reorient our focus. If we've been pursuing things and achievements in this life that are ultimately worthless in light of eternity, these are the weeks in which we are called back to what matters – trusting in God, making use of our gifts for His glory and the good of others with the time we have been given, and making decisions in light of the Kingdom that is coming rather than the kingdom that is passing away.

For many people, times of pain, struggle, and uncertainty are prime opportunities that God uses to direct our hearts to what really matters – our connection to Him through His Son. I pray that this month will serve as a time of renewed focus for you as well. Jesus is coming soon – what a source of hope! May God grant us to be faithful as we live in this moment, trusting in Him and loving those around us.

Christ's peace and joy,  
*Pastor Baye*

# Community Engagement Ministry

Submitted by Kim Thompson

Mission of the Community Engagement Ministry – To be Jesus' servants to meet physical, spiritual, and relational needs of the community.

**Foxview Random Acts of Kindness:** In October, we shared a treat with the Foxview students. If you ever want to see some smiles, join us at a Foxview handout. Check with Kim on the next date.

**Advent Sunday will be November 30<sup>th</sup>.** Watch for more information on devotionals and family advent activities that the Community Engagement Ministry will sponsor.

**College Exam Gifts:** We reach out to students with encouragement at the end of each semester. If you have a student in college this semester, please share their college contact information with Kim Thompson at [kthompson@hopedepere.org](mailto:kthompson@hopedepere.org).

The Mission of Community Engagement Ministry is to be Jesus' servants—being His hands and feet and sharing the fruits of the spirit with others. Thrivent Action Team Cards are a great way to help fund this outreach that we do to meet our Hope Family and Community's needs. We are grateful to members who partner with us on projects here at Hope.

Community Engagement sponsors the children's activity bags in church. We will also be providing Christmas Program Sunday School Thank You Treat Bags for the students in the Christmas Program. In addition, we will be coordinating a fellowship for the families following the 9:00 a.m. Christmas Program on Sunday, December 21<sup>st</sup>.

**Senior Laundry Love Meal:** CEM has offered to provide a meal for about 35-40 people at Fort Howard Senior Center on December 10<sup>th</sup>, which is a Laundry Love Day. Watch for a sign up in late November if you would like to contribute to the meal.

**The next Community Engagement Ministry meeting will be Tuesday, November 25<sup>th</sup>, at 6:00 p.m. via Zoom.** Please contact Kim Thompson if you would like to join.

## Hope's Health Corner

As the leaves turn and the temperatures drop, some of God's smallest creatures start looking for a cozy place to spend the winter, and sometimes that cozy place happens to be your home! Yes, it's spider season in Wisconsin. Before you go grabbing your shoe (or calling the exterminator), let's talk about our eight-legged neighbors and how to stay safe.

First, the good news: most spiders in Wisconsin are completely harmless. The ones you're likely to see in your basement or bathroom—like the common house spider, cellar spider (daddy longlegs), and orb weaver—are more helpful than harmful. They snack on flies, mosquitoes, and other pesky insects.

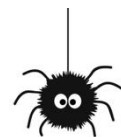
There are, of course, a couple of species that deserve a bit more respect:

- **Brown Recluse:** Rare in Wisconsin, but possible in the southern part of the state or hitchhiking indoors. They have a violin-shaped marking on their back. Their bite can cause skin irritation or breakdown—seek medical attention if you suspect one.
- **Northern Black Widow:** Also rare, but identifiable by the red hourglass shape on the underside of its shiny black body. A bite is serious and needs prompt medical care.

The key takeaway: most spiders here look scarier than they are. Still, it's wise to shake out shoes, gloves, or blankets stored in the garage or basement—because even the friendliest spider doesn't appreciate surprise hugs.

For most spider bites, if you get bitten:

1. Clean the bite area with soap and water.
2. Apply ice to reduce swelling.
3. Use an over-the-counter pain reliever or antihistamine for itching or discomfort.
4. Seek medical care if you notice severe pain, spreading redness, blistering, or symptoms like dizziness or nausea.



Remember: spider bites are rarely life-threatening—but infection from scratching can be, so keep that area clean!

Even spiders have their place in God's creation. After all, "The Lord has made everything for its purpose" (Proverbs 16:4). They may make us jump, but they're a reminder of the intricate balance of

creation—and perhaps a gentle nudge toward patience (and good housekeeping).

So, as you dust the corners this fall, give thanks for both your health and God's marvelous attention to detail... even in creatures that have more legs than we're comfortable counting!

Stay safe, stay curious, and maybe—just maybe—spare a spider or two this season.

With blessings (and bug spray),  
Bryan Carlson, BSN, RN and Leighann Heling, BSN, RN  
Hope Lutheran Parish Nurses

## Sunday School and Youth News

Submitted by Kaitlyn Gregory, DCE

### Sunday School News:

- Our verse of the month is Hebrews 13:6 *"So we say confidently 'The Lord is my helper, I will not be afraid. What can anyone do to me.'"*
- Our offering this month will go to De Pere Christian Outreach Christmas Store.
- Our student led worship, Christmas with Sunday School, will be Sunday, December 21<sup>st</sup>, at 9:00 a.m.

### Vacation Bible School:

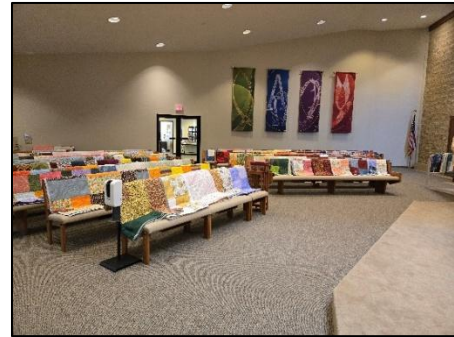
- Mark your calendar for Rainforest Falls VBS July 13-17, 2026!

### Youth News:

- ABC Festival: the auction will be held November 1<sup>st</sup>-7<sup>th</sup>, with item pick, raffle, children's activities, soup, and bake sale from 3:00 p.m. to 5:00 p.m. on Saturday, November 8<sup>th</sup>.
- Winter Blast: January 9<sup>th</sup> through 11<sup>th</sup>, our 5<sup>th</sup>-12<sup>th</sup> grade students will be attending Camp Luther's Winter Retreat. Forms due back to Kaitlyn by November 16<sup>th</sup>.
- Ignite (5<sup>th</sup> – 12<sup>th</sup> grade) is the first Sunday of each month from 6:00 p.m. to 7:00 p.m. This month it will be November 1<sup>st</sup>. We have begun a new curriculum called "Spiritual Conversations" where we discuss what spiritual conversations are and how to have them.
- Embers of Hope (7<sup>th</sup>-12<sup>th</sup> grade Bible Study) is every Wednesday from 6:30 p.m. to 7:30 p.m.

## Lutheran World Relief Quilting

If you would like to help make quilt tops for the Lutheran World Relief quilt project, **a bin with prepackaged materials and instructions can be found in the bookcase in the coat room.** Take a package home, sew together, and then return to the back of the bin. Please contact Lenore Swalheim with any questions.



## ABC Festival Information

The Auction is the largest fundraiser for Hope Youth and Angels of Hope Preschool. This year's auction once again will be conducted online. The auction website will be found on our website, [www.hopedepere.org](http://www.hopedepere.org), after October 29<sup>th</sup>. **Bidding will open at 12:00 noon on Saturday, November 1<sup>st</sup>, and will end at 6:00 p.m. on Friday, November 7<sup>th</sup>. It will be an exciting evening on Saturday, November 8<sup>th</sup>! From 3:00 p.m. to 5:00 p.m.** top bidders will be able to pick up their winning items. Come and enjoy the end of the auction and join us for a bowl of chili or booyah made by our youth and youth leaders, purchase baked goods sponsored by the Women of Hope, and participate in bucket raffles to benefit the "New Ceiling & Lights" project in the church basement.

**ABC Bucket Raffles:** If you missed the October 20<sup>th</sup> deadline to submit your auction item, we will still accept your donated item for the bucket raffle, along with any other new donations. Tickets for the bucket raffle will be sold onsite during the ABC Festival on November 8<sup>th</sup> from 3:00 p.m. to 5:00 p.m. Winning tickets will be drawn at 4:45 p.m.

## Designated Donations for Hope Lutheran Church

Designated donations may come from memorial monies or from any person who wishes to donate to a specific ministry or group. Undesignated funds will be applied as determined by the Church Council.

The following options are available for allocating such funds:

- Any established ministry, group, or funds of Hope Lutheran Church:
  1. Angels of Hope Preschool
  2. Community Engagement Ministry
  3. De Pere Christian Outreach Christmas Store or Food Pantry
  4. Education Ministry, including Sunday School or Adult education programs
  5. Men of Hope
  6. Music Ministry – Choir or Praise Team, or the audio and/or visual sound systems
  7. Women of Hope
  8. Youth Program
  9. Vacation Bible School
  10. Other – requires approval by Church Council
- Additionally, Hope has a “Wish List”:
  1. Angels of Hope Preschool scholarships
  2. Narthex Furniture – Phase 3
  3. Other – requires approval by Church Council

Please contact Pastor Baye or the Church Treasurer at [hopedepere treasurer@gmail.com](mailto:hopedepere treasurer@gmail.com) for further information.

 **ST. ANNE'S MEN'S MINISTRY** 

# CHILI FUNDRAISER

Saturday, November 1 11:00 am - 2:00 pm  
& Sunday, November 2 9:00 am - Noon

Recommend ordering ahead of time as the Chili sells out quickly. Scan QR code or order on St. Anne's Website, [stannesdepere.org](http://stannesdepere.org)



**\$10 PER QUART OR 4 QUARTS FOR \$36**

347 Libal Street, De Pere, WI 54115

## Angels of Hope – Uncle Mike's Kringle

On sale November 16<sup>th</sup> through November 29<sup>th</sup>

Cost of each Kringle coupon is \$23.00 (same as in the store) and \$4.75 goes to AOH. Coupons don't expire.





## Church Council members needed!

If you would like to learn more about leadership positions on the Council for 2026, we are looking to fill the following positions: Vice-Chair (which has an automatic step-up to Chair for 2027), Elders, Trustees, Recording Secretary, and Angels of Hope Board. Please contact Dave Mellem if you are interested.



## Hope's organization project has been completed!

Thank you to all the volunteers that were willing to sort through things and carry things out of the building this year. Everyone's willingness to simplify has been greatly appreciated.

**As a result of this project, many items have moved to new areas. Therefore, if you are looking for something and cannot find it, please come ask in the Church Office.**



## Ushers needed for all services!

Training will be provided.

If interested, please speak with Rick Haegele, Head Elder, or Pastor Baye.

AUCTION BAKE SALE CHILI

## ABC Festival 2025

November 8, 2025 | 3:00 PM to  
5:00 PM

Hope Lutheran Church  
700 S Superior St  
De Pere, WI

ONLINE AUCTION OPENS SATURDAY,  
NOVEMBER 1<sup>ST</sup> AT 12PM & CLOSSES  
FRIDAY, NOVEMBER 7<sup>TH</sup> AT 6PM.

Access our online auction and soup  
pre-order forms available here:



N.E.W. Lutheran High School's



## 35th Annual Dinner AUCTION

*Live the adventure!*

Saturday,  
NOVEMBER 8TH

Rock Garden Banquet Hall  
1951 Bond Street, Green Bay, WI

SCAN ME



[www.newlhs.com](http://www.newlhs.com)

# LUTHERAN HOPE IN A DARK WORLD

*How to Navigate the Darkness with Light*

Saturday, November 8, 2025

9:00 AM - 12:00 PM\*

FREE EVENT!

\*LUNCH IS PROVIDED

PLEASE RSVP

FEATURED SPEAKER:

REV. HARRISON GOODMAN  
EXECUTIVE DIRECTOR OF MISSION AND  
THEOLOGY - HIGHER THINGS



*Again Jesus spoke  
to them, saying,  
"I am the light of  
the world.  
Whoever follows  
me will not walk  
in darkness, but  
will have the light  
of life."  
John 8:12*

FAITH LUTHERAN CHURCH  
2335 S. WEBSTER AVE.  
GREEN BAY, WI 54301

[flcgb.com](http://flcgb.com)

Sponsored by:



**IT'S CHILI INSIDE!**

**FRIDAY  
NOV 14<sup>th</sup>**

**\$10  
ADMISSION**

**CHILI  
STEWES  
SOUPS**

**BAKE SALE  
RAFFLES  
50/50**

**DOORS - 4:30PM  
SOUPS 5-8PM**

**OLDE 41  
1966 Velp Ave.  
Green Bay**

**laundry LOVE**  
Brown County

**EVENT SPONSORS**  
People Caring More  
**pcm**  
CREDIT UNION

**VANDERVEST**  
Harley-Davidson  
of Green Bay

**CONTACT: [laundrylovebrowncounty@gmail.com](mailto:laundrylovebrowncounty@gmail.com)**

Christian Outreach Ecumenical  
Thanksgiving Dinner

[christianoutreachgb.com](http://christianoutreachgb.com)

**CHRISTIAN OUTREACH**  
ECUMENICAL THANKSGIVING MINISTRY  
GREEN BAY

**Thanksgiving  
Dinner**

**920-490-7030**

Meals will be delivered to  
Green Bay Area addresses  
by delivery volunteers.  
No in-person activities  
at Lambeau Field.

Food will arrive fully  
cooked but chilled 8-11 am  
on Thanksgiving Day,  
ready to reheat at your  
convenience.

Call to reserve your meal  
delivery. Phone line open  
until Nov. 12 or until filled,  
whichever comes first.  
Hablamos Español.

**GREEN BAY PACKERS  
GIVE BACK**

Christian Outreach Ecumenical Thanksgiving Ministry Inc. is a non-profit 501(c)(3) organization  
PO Box 28521 Green Bay, WI 54324-0221

**SCAN TO DONATE**





To all those who served at Hope in October, thank you for offering your time and talents in service to the Lord. We praise Him for giving you the gifts you possess and the heart to share them. Thank you for being Jesus' hands and feet among us. You are needed and appreciated.

## Happy Anniversary!

Ross & Kylie Helein	11/2
Jack & Linda Jilot	11/13
Dale & Jayne Schroeder	11/13
Bob & Elaine Carlson	11/20
Eric & Barb Andringa	11/28



## Happy Birthday!

Ben Cheslock	11/1
Christopher McCormick	11/1
Kurt Sebo	11/1
Brittany Drath	11/2
David Mason	11/2
Cordell Schrank	11/2
Shawn Schmidt	11/3
Natasha McCormick	11/4
David Schmidt	11/4
Xander VandeHey	11/5
Bob Splittgerber	11/6
Paul Mittelstaedt	11/8
Liz Danner	11/9
Keith Kohn	11/9
Katie Hoffmann	11/10
Jaime Burhite	11/11
Autumn Bierhals	11/12
David Gerrits	11/14
Regan Schuette	11/14
Mike Tollar	11/14
Logan Lemke	11/15
David Osen	11/15
Jordan Mortenson	11/17
Danyelle Hillmann	11/18
Carter Kaufmann	11/18

Ryan Lemke	11/18
Joe Muniz	11/18
Sandra Fay Pantzlaff	11/18
Mary Wiskow	11/18
Russell Schroeder	11/20
Barbara Kimmeth	11/20
Troy Schwartz	11/20
Haily Atkinson-Welch	11/21
Barb Andringa	11/22
Chloe Becker	11/24
Tricia Bergsbaken	11/24
Guy McCauley	11/24
Joan Stenklyft	11/24
Amber Cheslock	11/26
Owen Fawcett	11/26
Angelina Novitski	11/26
Dawson Bongers	11/27
Ingrid Carr	11/28
Cassandra Lambert	11/29
Joe VandenLangenberg	11/30
John Vanderpoel	11/30

# November 2025

Sun	Mon	Tue	Wed	Thu	Fri	Sat
						<b>1</b> <b>12:00 noon ABC Online Auction Begins</b>
<b>2</b> <b>8:00 AM</b> Worship <b>9:15 AM</b> Sunday School <b>9:30 AM</b> Adult Bible Study <b>10:27 AM</b> Worship <b>6:00 PM</b> Ignite Youth Meeting	<b>3</b> <b>6:00 PM</b> Voters' Meeting <b>6:30 PM</b> Praise Team <b>7:30 PM</b> Moms of Hope	<b>4</b> <b>7:30 AM</b> Oak Street Bible Study <b>8:00 AM</b> Bulletin Submissions Due <b>9:30 AM</b> Ladies Bible Study <b>6:15 PM</b> Men's Bible Study <b>7:30 PM</b> Ladies Bible Study	<b>5</b> <b>5:15 PM</b> Choir <b>5:30 PM</b> Confirmation <b>6:30 PM</b> Embers of Hope <b>6:30 PM</b> Worship <b>7:45 PM</b> Elders	<b>6</b> <b>6:30 PM</b> The Chosen Season 5	<b>7</b> AOH Field Trip <b>6:00 PM ABC Online Auction Ends</b>	<b>8</b> <b>3:00 PM – 5:00 PM</b> Auction pickup with chili/booyah and bake sale  NEW Lutheran High School Auction at Rock Garden
<b>9</b> <b>8:00 AM</b> Worship <b>9:15 AM</b> Sunday School <b>9:30 AM</b> Adult Bible Study <b>10:27 AM</b> Worship	<b>10</b> <b>6:30 PM</b> Council <b>6:30 PM</b> Praise Team	<b>11</b> <b>7:30 AM</b> Oak Street Bible Study <b>8:00 AM</b> Bulletin Submissions Due <b>9:30 AM</b> Ladies Bible Study <b>6:00 PM</b> Women of Hope <b>6:15 PM</b> Men's Bible Study <b>7:30 PM</b> Ladies Bible Study	<b>12</b> <b>5:15 PM</b> Choir <b>5:30 PM</b> Confirmation <b>6:30 PM</b> Embers of Hope <b>6:30 PM</b> Worship	<b>13</b> <b>6:30 PM</b> The Chosen Season 5	<b>14</b>	<b>15</b>
<b>16</b> <b>8:00 AM</b> Worship <b>9:15 AM</b> Sunday School <b>9:30 AM</b> Adult Bible Study <b>10:27 AM</b> Worship	<b>17</b> <b>6:00 PM</b> Angels of Hope Board <b>6:30 PM</b> Praise Team	<b>18</b> <b>7:30 AM</b> Oak Street Bible Study <b>8:00 AM</b> Bulletin and Newsletter Submissions Due <b>9:30 AM</b> Ladies Bible Study <b>6:15 PM</b> Men's Bible Study <b>7:30 PM</b> Ladies Bible Study	<b>19</b> <b>5:15 PM</b> Choir <b>5:30 PM</b> Confirmation <b>6:30 PM</b> Embers of Hope <b>6:30 PM</b> Worship <b>DPCO Food Pantry Collection</b>	<b>20</b> <b>6:30 PM</b> The Chosen Season 5	<b>21</b>	<b>22</b>
<b>23</b> <b>8:00 AM</b> Worship <b>9:15 AM</b> Sunday School <b>9:30 AM</b> Adult Bible Study <b>10:27 AM</b> Worship <b>DPCO Food Pantry Collection</b>	<b>24</b> <b>6:30 PM</b> Praise Team	<b>25</b> <b>7:30 AM</b> Oak Street Bible Study <b>8:00 AM</b> Bulletin Submissions Due <b>9:30 AM</b> Ladies Bible Study <b>6:00 PM</b> Education Ministry <b>6:00 PM</b> CEM via Zoom <b>7:15 PM</b> Men's Bible Study <b>7:30 PM</b> Ladies Bible Study	<b>26</b> No Angels of Hope Preschool <b>6:30 PM</b> Thanksgiving Worship	<b>27</b> Church Office Closed 	<b>28</b> No Angels of Hope Preschool	<b>29</b> <b>9:00 AM</b> Church Christmas Decorating
<b>30</b> <b>8:00 AM</b> Worship <b>9:30 AM</b> Adult Bible Study <b>10:27 AM</b> Worship <b>3:00-8:00 PM</b> Fellowship Hall Reserved			<b>Publication Information:</b>  <i>Bulletin information is due Tuesdays at 8:00 a.m.</i>  <i>Newsletter information is due by 8:00 a.m. on the 3<sup>rd</sup> Tuesday of the month.</i>  <i>Please call the church office or email <a href="mailto:office@hopedepere.org">office@hopedepere.org</a>.</i>			